

MScHSM & PgDHSM Programme Director:

Prof. YEOH, Eng-kiong, GBS, OBE, JP

MScHSM Programme Co-Director:

Prof. FUNG, Hong, JP

PgDHSM Programme Co-Director:

Prof. WONG, Lai-yi Eliza

CONTACT US

A:2/F, School of Public Health,
Prince of Wales Hospital, Shatin,
New Territories, Hong Kong

T: (852) 2252 8431/ 2252 8434

F: (852) 2145 7489

E: healthadmin@cuhk.edu.hk

www.mschsm.sphpc.cuhk.edu.hk



This leaflet contains information as of early January 2017.

TEACHERS – WHO THEY ARE

**Prof. YEOH, Eng-kiong,
GBS, OBE, JP**

- Director, JC School of Public Health and Primary Care, CUHK
- Former Secretary for Health, Welfare and Food, Government of the Hong Kong Special Administrative Region
- Former Chief Executive, Hong Kong Hospital Authority



Prof. FUNG, Hong, JP

- Professor of Practice in Health Services Management, JC School of Public Health and Primary Care, CUHK
- Executive Director, CUHK Medical Centre
- Former Cluster Chief Executive (New Territories East Cluster), Hong Kong Hospital Authority



Prof. HUNG, Chi-tim, JP

- Professor of Practice in Health Services Management, JC School of Public Health and Primary Care, CUHK
- Former Cluster Chief Executive (New Territories East Cluster), Hong Kong Hospital Authority

Prof. HO, Shiu-wei William, JP

- Honorary Professor, JC School of Public Health and Primary Care, CUHK
- Medical Superintendent, St. Paul's Hospital, Hong Kong
- Former Chief Executive, Hong Kong Hospital Authority

Dr. LUI, Siu-fai, M.H., JP

- Clinical Professional Consultant, JC School of Public Health and Primary Care, CUHK
- Former Chairman, Central Committee for Quality and Safety, Hong Kong Hospital Authority
- Former Chairman, Central Committee for Patient Relations and Engagement, Hong Kong Hospital Authority



Prof. TSE, Sau-ling Nancy, JP

- Adjunct Professor, JC School of Public Health and Primary Care, CUHK
- Former Director (Finance and IT Services), Hong Kong Hospital Authority

WHO SHOULD APPLY

Healthcare professionals and managers in both public and private health sectors who:

- wish to pursue leadership roles in health services management;
- have at least 3 years of post-qualification healthcare or related work experience; and
- fulfil the general qualification for admission and English Language Proficiency Requirement stipulated on the CUHK Graduate School website.

RECOGNITION

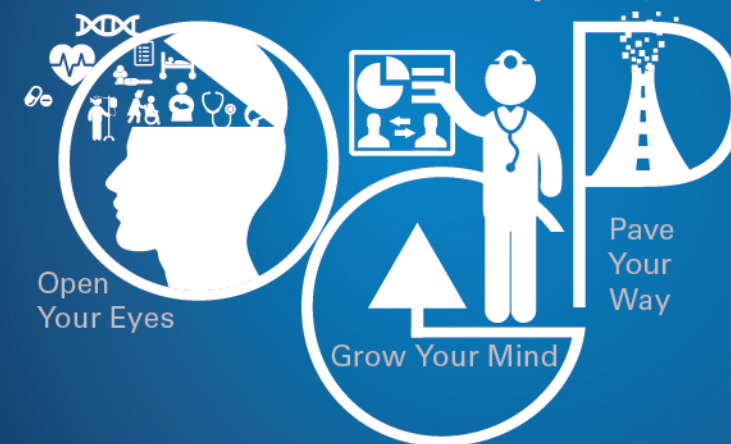
MScHSM and PgDHSM are recognised by the Medical Council of Hong Kong as a quotable qualification.



Master of Science in Health Services Management

JC School of Public Health and Primary Care
The Chinese University of Hong Kong

Build Healthcare Leadership



Open
Your Eyes

Grow Your Mind

Pave
Your
Way



PROGRAMME OVERVIEW

Common courses shared by MScHSM and PgDHS (14 units)

- » Health Policy and Management
- » Foundations of Public Health
- » Basic Epidemiology and Health Statistics*
- » Healthcare Systems and Policies
- » Healthcare Organization and Management
- » Managing in Healthcare

Advanced courses in MScHSM (16 units)

- » Health Economics and Healthcare Financing
- » Health Informatics
- » Human Resource Management
- » Financial Management
- » Quality and Safety Management
- » Healthcare Ethics and Medico-legal Management
- » Health Services Planning and Technology Management

Case Study Project (6 units / 2 units)

Master-level Guided Case Study (6 units)

- » Applicable to MScHSM students

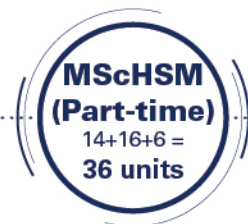
Case Study Series on Health Services Management (2 units)

- » Applicable to PgDHS students

Experiential Learning (Non-credit bearing)

- » Overseas Study Tour
- » Local visits to reputable business corporations and healthcare organizations in Hong Kong
- » Series of Seminar given by distinguished speakers

STUDY PERIOD



MScHSM:
Normative Study Period: 2 years;
Maximum Study Period: 4 years



PgDHS:
Normative Study Period: 1 year;
Maximum Study Period: 3 years

TUITION

Programme	Normative Study Period	Tuition Fee
Master of Science in Health Services Management (Part-time)	2 years	HK\$165,600
Postgraduate Diploma in Health Services Management (Part-time)	1 year	HK\$73,600

APPLICATION TIMELINE



APPLICATION DEADLINE



HOW TO APPLY?

Applications can be submitted via the Graduate School online application system at <http://www.gs.cuhk.edu.hk>

OUR PILLARS



* Course title amendment is subject to the approval of the University.



ACTIVITY HIGHLIGHTS & ALUMNI VOICES



Mr. Timothy Tso

Class of 2015
Founder & CEO,
Medical Professional Services LTD



Being both a healthcare professional and a businessman who provides health services, HSM programme widens my career vision and facilitates my growth further in the field. I learnt to be a "Leader" rather than just a "Manager" of a company.

Dr. KY Chan

Class of 2013
Consultant,
Kwong Wah Hospital,
Hospital Authority



Demanding yet rewarding, of balanced depth and comprehensiveness, it exposes clinical doctors to a new horizon.

Mr. Lawrence Cheung

Class of 2014
Senior Manager,
Health Services Department,
AIA International Limited



This master programme gave me many opportunities to learn from and be mentored by very talented professionals who specialized in Health Services Management.

Ms. Pauline Poon

Class of 2013
Senior Physiotherapist,
Hospital Authority



Be prepared that there is a fairly heavy work load, nevertheless, it's a great experience to meet people coming from different backgrounds and to make new friends, they are there to support you and to make you feel like part of the team.

Ms. Cinder Chan

Class of 2014
Senior Manager,
Quality, Safety &
Risk Management,
Gleneagles Hong Kong



Studying this programme does not only enrich my knowledge, but the interactive teaching method enables me to learn a lot of practice experiences from multidisciplinary classmates. It's indeed wonderful to meet talented classmates here.

